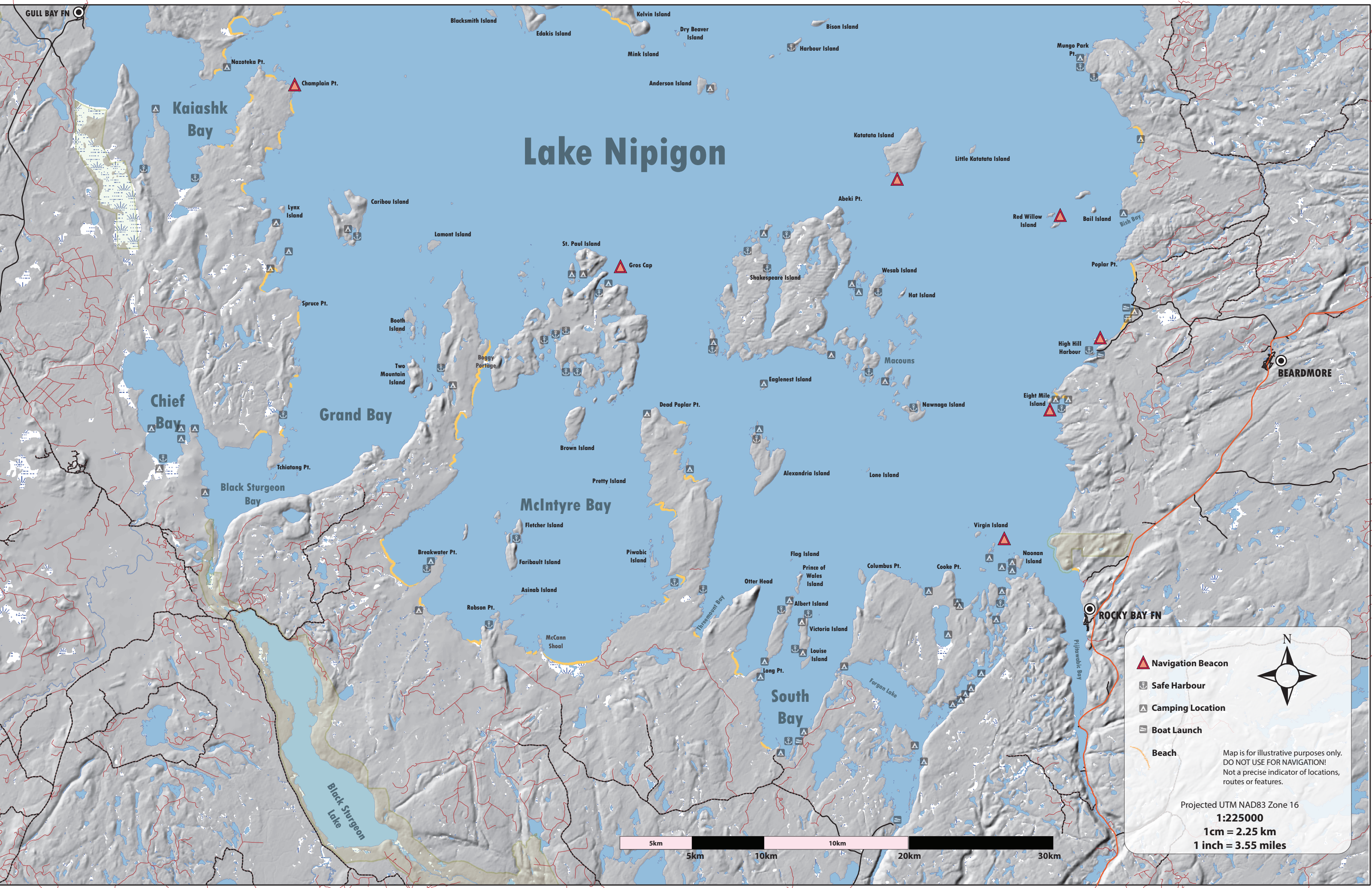


Lake Nipigon



Navigation Beacon (Red Triangle)

Safe Harbour (Blue Anchor)


Camping Location (Grey Triangle)

Boat Launch (Grey Rectangle)

Beach (Yellow Line)

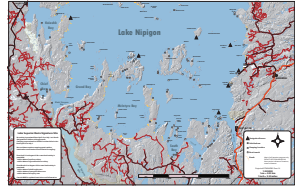
Map is for illustrative purposes only.
DO NOT USE FOR NAVIGATION!
Not a precise indicator of locations,
routes or features.

Projected UTM NAD83 Zone 16
1:225000
1cm = 2.25 km
1 inch = 3.55 miles

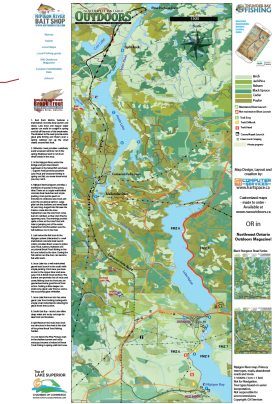


Other maps in series

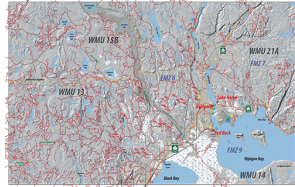
Lake Nipigon South



Nipigon River Detailed



Nipigon Area



Special rules/regulations (From 2017 fishing Handbook)

Always check current regulations/restrictions:

<https://www.ontario.ca/page/fisheries-management-zone-6-fmz-6>

Lake Nipigon - Ombabika Bay (50°15'N., 88°15'W.) and Wabinosh Bay (50°02'N., 88°50'W.) and the tributaries of the bays up to the first barrier including the Little Jackfish River downstream from the centre line of the CN railway bridge and Wabinosh River downstream of Wabinosh Lake.

Walleye and Sauger S - 2 and C - 2, not more than 1 greater than 46 cm (18.1 in.).

Lake Nipigon (West Bay) the waters lying north and west of the north tip of Boles Island.

Fish sanctuary - closed all year.

Lake Nipigon and all tributaries downstream from the first falls, rapids, dams or lakes identified on a Provincial Series Map or the entire stream if there are no falls, rapids, dams or lakes identified on a Provincial Series Map or if the tributary does not appear on a Provincial Series Map; also including:

1. Waters on the islands of Lake Nipigon, including Forgan Lake, Bonner Lake, Little Bonner Lake and Jackpot Lake (Madeline Lake);
2. Gull River, downstream from the Hwy 527 bridge;
3. Kabitotikwia River, downstream from the Hwy. 527 bridge;
4. Poshkokagan River, downstream from and including the rapids (49°25'39"N., 89°05'12"W.) located 13 km (8.1 mi.) upstream from the Black Sturgeon Road bridge;
5. Wabinosh River downstream from Wabinosh Lake;
6. Little Jackfish River, downstream from the centre line of the CN railway bridge.

- Only artificial lures may be used when angling through the ice.
- Only one barbless hook may be used.
- No person shall use stringers, impounding devices or live holding boxes.
- A person may hold fish, other than Brook Trout or Lake Trout, in a livewell.
- Walleye and Sauger open from Jan. 1 - Apr. 14 & June 10 - Dec. 31.
- Northern Pike open from Jan. 1 - Apr. 14 & 3rd Sat. in May - Dec. 31. Northern Pike S - 4 and C - 2, none between 70-90 cm (27.6 in. - 35.4 in.) and not more than 1 greater than 90 cm (35.4 in.).
- Brook Trout open from 4th Sat. in Apr. - Sept. 15. Brook Trout S - 1 and C - 0, must be greater than 56 cm (22 in.).
- Lake Trout open from Mar. 1 - Sept. 30. Lake Trout - not more than 1 greater than 70 cm (27.6 in.).
- No possession of live Brook Trout or Lake Trout.
- Dead smelt may be used as bait or possessed for use as bait.

Camping permits:

Canadian residents (Canadian citizens and people who have lived in Canada for at least 7 months of the preceding 12-month period)

Free up to 21 days on any one site per calendar year.

Non-residents: \$9.35 + Tax per person per night

Permits can be obtained online, participating service Canada locations and from authorized license issuers.

For more information:

<https://www.ontario.ca/page/camping-crown-land>

Disclaimer:

MAP IS FOR RECREATIONAL PURPOSES ONLY! The information on this map derived from digital databases provided by the Government of Canada as well as generated data from GH Services. Care has been taken in the creation of this map. GH Services cannot accept any responsibility for errors, omissions, or positional accuracy. Not all roads or trails may be shown or named. Some roads or trails may be private or incomplete. Forest and bathymetry boundaries are generalized.

There are no warranties, expressed or implied, including the warranty of merchantability or fitness for a particular purpose, accompanying this product. However, notification of any errors will be appreciated.

Hunt/Fish Map Series Lake Nipigon - South

NORTHWEST ONTARIO
OUTDOORS
OUTDOOR RESOURCES FOR NW ONTARIO
www.nwoutdoors.ca



nipigonriver.com



1 00002 01703 4

1:225,000 UTM NAD83

