

Mining Camps of British Columbia

A SOUVENIR of Rossland, Nelson, Greenwood
Phœnix, Grand Forks, Kaslo, Revelstoke
Cranbrook, Fernie and the Kootenay, Boundary
and Crow's Nest Districts. Illustrated with
Fifty Excellent Views of Typical Scenes

PUBLISHED BY W. G. MACFARLANE, TORONTO, ONT.

Publisher of Souvenir View Books and Picture Post Cards

*The
Mining
Camps of
British
Columbia*

ONE of the most interesting regions of the Great Rocky Mountain Range of North America is contained in the Kootenay, Boundary and Crow's Nest countries, where are located the famous mining camps of British Columbia. There is much here to interest the tourist and traveller—the thriving mining communities, the steep mountain trails, the towering mountain chains, the broad expanses of lake and river, the dashing torrents and the deep gulches. Mining life with its freedom and its dash of wildness is always of interest to the sight-seer and here in this region are located a number of typical mining towns. The spirit of adventure, freedom from restraint and strong feeling of brotherhood characterize these mining towns, and what is of interest to the visitor, an unbounded hospitality. The principal mining regions of British Columbia are the Kootenay country, the Boundary country and the Crow's Nest country.

The Kootenay country is a country of marvellously rich ore deposits and of illimitable possibilities. Only a small portion of the country has been developed and there are great beds of rich ores in this region still undiscovered. Rossland and Nelson are the chief mining towns of the Kootenay country and, in fact, of British Columbia. Here are located the famous Leroy, War Eagle and Centre Star Mines. Rossland is perched picturesquely away up on the mountain slopes above the Columbia river, and is reached by a stiff railway climb through a land of great beauty. It is a well-built city of eight thousand people and has some very substantial business blocks. The town of Nelson, with its famous Hall mine, has about an equal population and is located on the Kootenay river. It is a very pretty town. The landscape at Nelson is one of surpassing beauty, the mountains rising high all about, while the valley of the river reminds one of the beautiful valleys of Switzerland. Nelson is a clean and well-built city, and is much sought by tourists owing to its salubrious atmosphere and excellent facilities for boating and cool summer climate. Kaslo is another progressive town in the Kootenay country and is located on the shore of Kootenay lake, being the outlet of the Sloacan country, a famous silver lead mining region, admittedly the richest in America to day. Kaslo is also a pretty tourist centre. Other mining camps in the Kootenay country are Revelstoke, Sandon and Trail.

The Crow's Nest country possesses the richest coal mining areas in the world. Fernie is a town that sprang up in a night almost. It has a population of six thousand people and is the headquarters of the Crow's Nest Coal Mines, one of the most valuable mining properties in the world. The coke ovens at Fernie turn out a coke superior to any manufactured in the United States. With the enlarged development of the mines, Fernie is increasing rapidly in population. Cranbrook is another enterprising town of the Crow's Nest country. The Crow's Nest Pass, through which the Canadian Pacific Railway threads its way, is one of magnificent scenery, and the whole trip to the coast via the Crow's Nest branch of the C.P.R., and by the palatial steamers of the road on the Kootenay and Arrowhead lakes, is one of engrossing interest. The Boundary district is one of the newer fields of mining development. The chief towns of this region are Phenix, Greenwood and Grand Forks. At Grand Forks is the Granby Smelter and at Greenwood is the smelter of the British Columbia Copper Co. of New York. Phenix has several important mines.



Nelson, from across the Kootenay River



KOOTENAY RIVER B.C



Kootenay River, near Nelson



BONNINGTON FALLS
KOOTENAY RIVER CO.

1910
KOOTENAY RIVER CO.

Bonnington Falls, Kootenay River, near Nelson



KOOTENAY LAKE NELSON B.C.



Kootenay Lake, Nelson



Nelson and the Kootenay River



The New Post Office, Nelson



Nelson, from the Hall Mine Smelter



(Rosland Buildings)

Court House

Bank of Montreal

New Post Office



(Rosland Mines)

Centre Star Mine

War Eagle, Le Roi, Josie and No. 1 Mine

Le Roi Shaft House



Columbia Avenue, Rossland



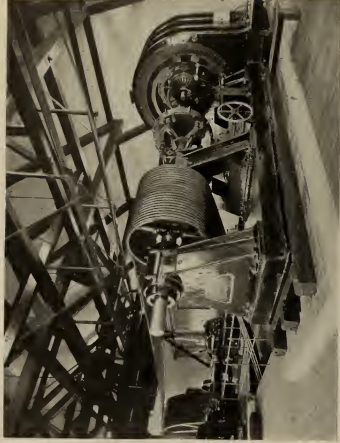
War Eagle Mine, Rosslund



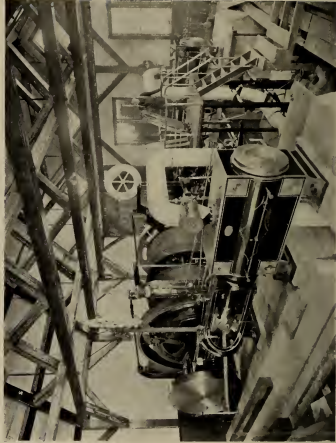
Le Roi Mine, Rössland



The Black Bear Works of the Le Roi Mine, Rossland



850 I.H.P. Three Phase Electric Motor Driving Corliss 40 Drill Compressor
Nickel Plate Mine, Rossland



Hoisting Engines, Le Roi Mine



Mount Begbie and Columbia River, Revelstoke



Columbia River, Revelstoke



Revelstoke



Packing Scene, showing Prospectors starting out from
Camp with Packs on their Backs



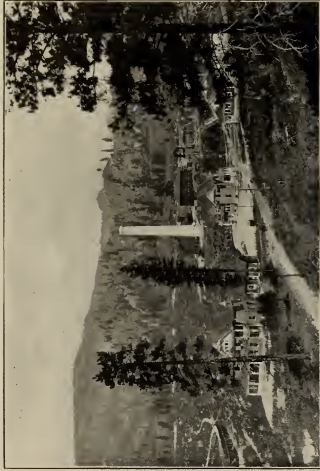
Phoenix, B C.



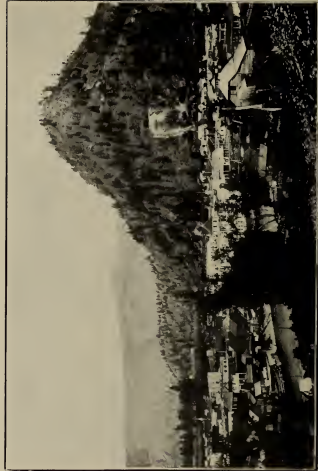
Granby Mine, Phoenix, B.C.



Snowshoe Mine, Phoenix, B.C.



Granby Smelter and Offices, Grand Forks



Grand Forks, B.C.



Kaslo City from the Northwest



A Frequent Afternoon Boating Scene at Kaslo



Sailing on Kootenay Lake



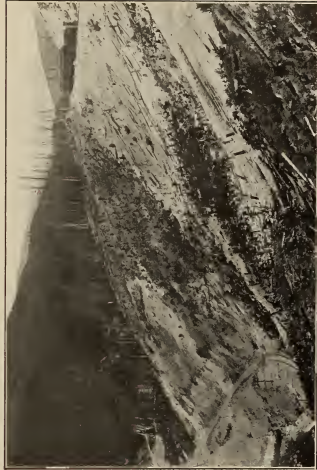
Baker Street, Cranbrook



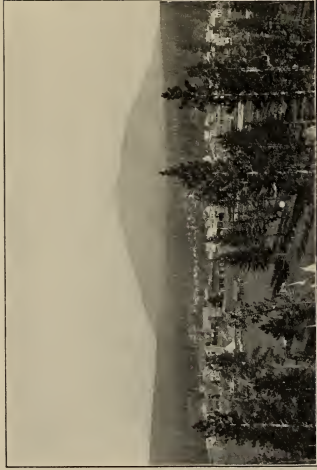
Public School Buildings, Cranbrook



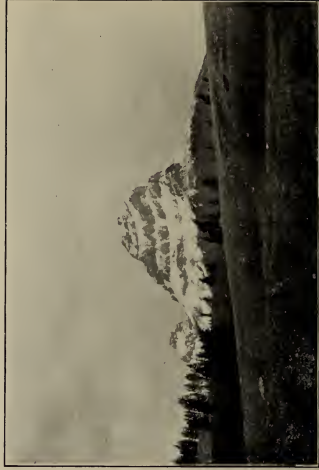
The Rockies near Cranbrook, B.C.



The Loop, Crow's Nest Pass, B.C.



Cranbrook, B.C.



Crow's Nest Mountain, B.C.



Cave Falls, Crow's Nest Pass



Payne Bluff, Kaslo and Slocan Railway



Elk River Canon, Crow's Nest Pass



Moyie Lake, Crow's Nest Pass